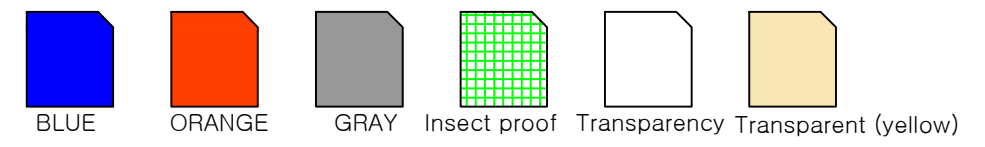


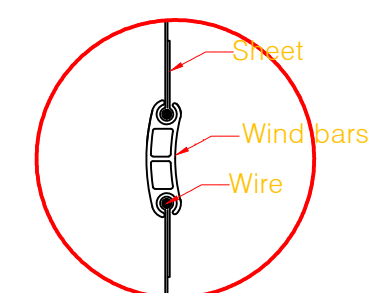
Model	C-1
-------	-----

SHEET COLOR

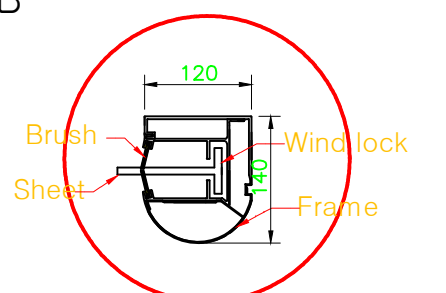


User COLOR selectable

A



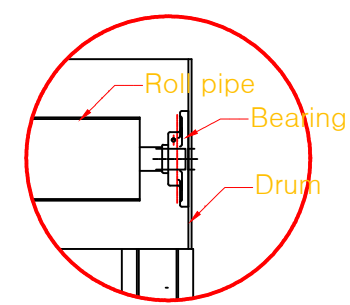
B



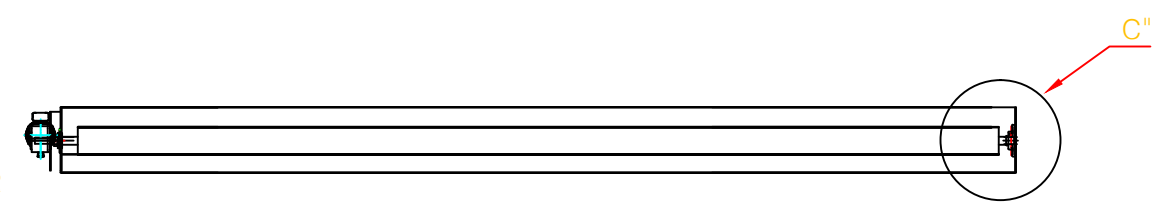
Wind-bar is high-strength by AL dual extrusion. So, it prevents the breakaway from wind and possible to let each sheet be separated. Thus, it is easy to exchange the sheet and save the cost for A/S

To prevent the breakaway and the transformation from wind pressure, COAD installs wind-lock system in the frame. Also, COAD puts (diagonal) brush on the rail so it blocks the inflow of outside objects. The rounded frame is beautiful exterior.

C

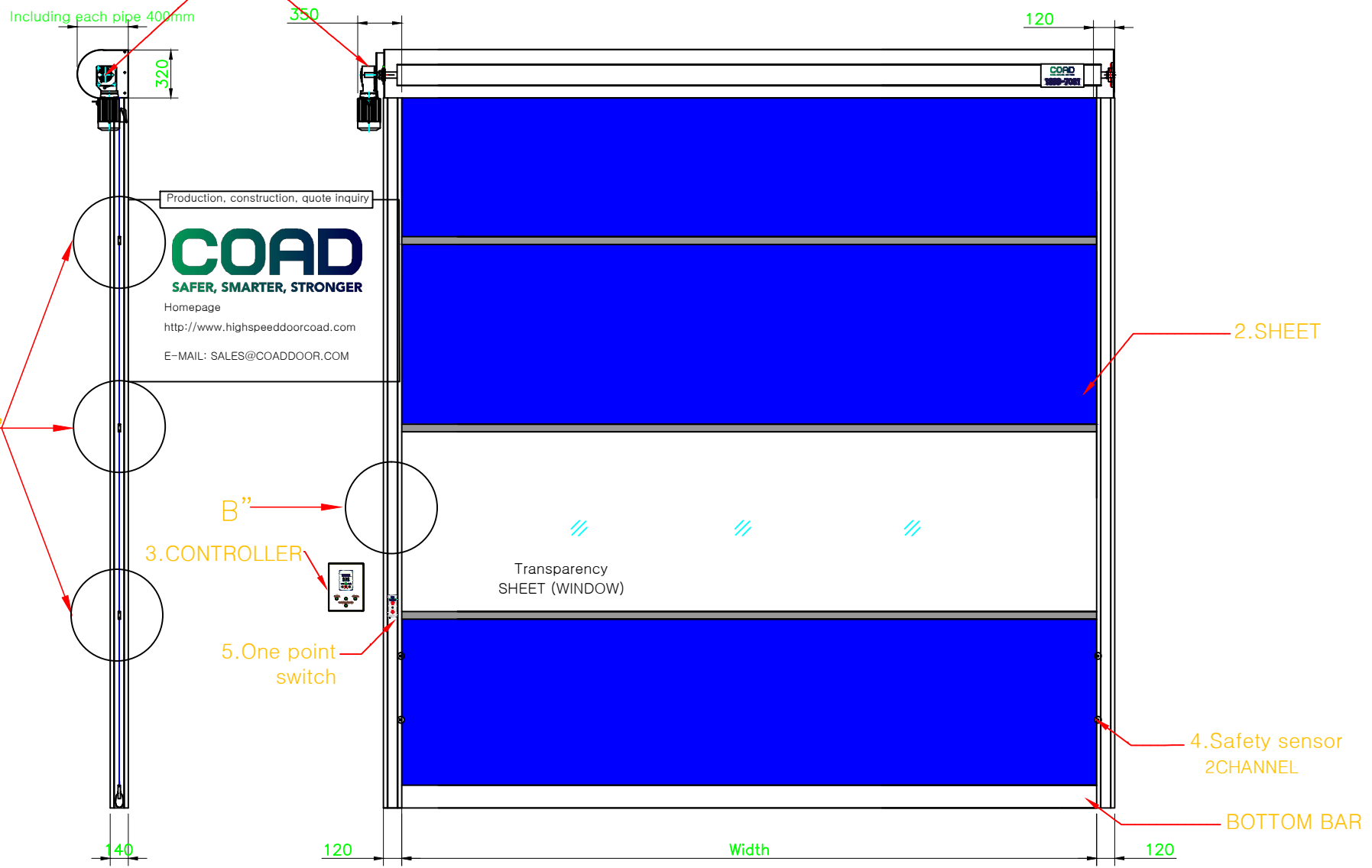


By designed bearing not to be exposed to outside, COAD improves the fault caused by outside materials and COAD door becomes free from corrosion.



1 SPD Floor plan

1. MOTOR/ENCODER (SUMITOMO MOTOR APPLY) MADE IN JAPAN



1 SPD Cross-section

1 SPD elevation

7	Etc	Security device interlocking, built-in switch application, separation prevention application
6	OPTION	Remote control, safety post, infrared sensor, Metal detection sensor
5	SWITCH	One point switch, proximity switch applicable
4	SENSOR	2CHANNEL PHOTO SENSOR for safety
3	CONTROLLER	INPUT AC220V single phase, double open control, manual / automatic, automatic door application
2	SHEET	THK 2mm, PVC COATING, COATING
1	MOTOR	SUMITOMO HYPONIC TYPE 1HP/0.5HP MOTOR(MADE IN JAPAN)
No.	Product Name	Contents

Field name	Date	0000-00-00	Door type		Basic type		Drawing department		Note
	Drawing number	00000000	Scale	N/S	Unit	mm	Drawing size	A3	
			Drawing engineer		Lee Taehyung				



TEL : 1899-7081
 FAX : 0505-182-5567
 E-MAIL : SALES@COADDOOR.COM
 HOME PAGE : WWW.COADDOOR.COM
 ADDRESS : Gyeonggi-do Namyang-eup
 Hyundai-Kia road 202-37